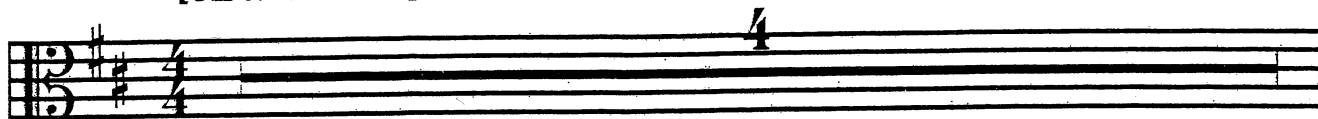


BLOOSY-WOOSY

VIOLA

By Frank M. Rodgers

BLUES TEMPO
[SWING STYLE]



Piano Introduction

5 **BOW LIFT**
2 3 2 — 2 3 2 — 2 3 2 3 0

A 9 **BOW LIFT**
2 Low 2 Low 2 High 3 2 3 0

B 13 **BOW LIFT**
0 1 0 — 3 2 3 2 3 0

C 17 18 19 20

D 21 22 23 24
2 Low 2 Low 2 High

E 25 26 27 28 **BOW LIFT**
0 1 0 — 3 2 3 2 3 0

BLOOSY-WOOSY

VIOLA

F BOW LIFT

29 30 31 32

2 3 2 2 3 2 2 3 2 3 0

G BOW LIFT

33 34 35 36

2 Low 2 Low 2 High 3 2 3 0

H BOW LIFT

37 38 39 40

0 1 0 3 2 3 2 3 0

I

41 42

0 1 0 3 2 3 2 3 0

J TREMOLLO

43 44 45

2 High 2 Low 1 0